

Chapter 3

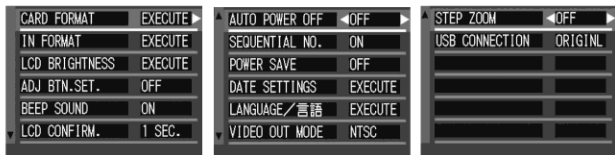
Changing Camera Settings

Changing Camera Settings.....	110
-------------------------------	-----

Changing Camera Settings

SETUP Menu

The SETUP menu consists of three screens. Press the ▲▼ buttons to switch between screens.



Setting	Option	Refer to
CARD FORMAT	_____	P.111
IN FORMAT	_____	P.112
LCD BRIGHTNESS	_____	P.113
ADJ. BUTT. SET.	[OFF], PIC QUALITY (), AF/ MF, SHARP, PHOTOMETRY ()	P.114
BEEP SOUND	[ON], OFF, Shutter release sound	P.115
LCD CONFIRM.	OFF, [1], 2, 3 Seconds	P.116
AUTO POWER OFF	OFF, [1], 5, 30 Minutes	P.117
SEQUENTIAL NO.	ON, [OFF]	P.118
POWER SAVE	ON, [OFF]	P.119
DATE SETTINGS	_____	P.120
LANGUAGE	日本語, [ENGLISH], DEUTSCH, FRANÇAIS, ITALIANO, ESPAÑOL, 简体中文, 繁体中文, 한국어	P.121
VIDEO OUT MODE	[NTSC], PAL	P.122
STEP ZOOM	ON, [OFF]	P.123
USB CONNECTION	MAS STR, [ORIGINL]	P.124

Getting the SD Memory Card Ready for Use (CARD FORMAT)

If the error message "This card cannot be used" is displayed, or if you have formatted a card with a computer or some other device, it will be necessary to format the SD Memory Card prior to use. Formatting is the process of preparing a card so image data can be written on it.



Caution

If you format a card that still has images stored on it, the images will be lost.



Reference

For how to format internal memory, see P.112.

To format a card, follow the steps below.

1. Turn the Mode Dial to **SETUP**.
2. Press the **▼** button to select [**CARD FORMAT**] and press the **OK** or **▶** button.

A screen appears to confirm formatting.

3. Press the **◀▶** button to select [**YES**] and then press the **OK** button.

Formatting starts. When it is done, the display returns to the **SETUP** menu.

If no SD Memory Card is inserted, a message will be displayed.

After turning the power off, load an SD Memory Card and repeat the formatting process again.



Note

Protecting your images from being deleted

If you move the card's write-protection switch to **LOCK**, your still images cannot be accidentally erased and the card cannot be formatted.

If you release the protection (by returning the switch to its original position), it is once again possible to erase images and format the card.

Formatting Internal Memory (IN FORMAT)

If an error message “Format the internal memory” is displayed, it will be necessary to format the internal memory prior to use.



Caution

Formatting the internal memory erases all of the images recorded in the memory.

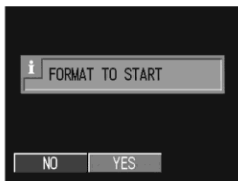
To format internal memory, follow the steps below.

1. Turn the Mode Dial to **SETUP**.
2. Press the ▼ button to select **[IN FORMAT]** and then press the OK or ► button.

A screen appears to confirm formatting.

3. Press the ◀▶ buttons to select **[YES]** and then press the OK button.

Formatting starts. When it is done, the display returns to the SETUP menu.



Adjusting the Brightness of the LCD Monitor (LCD BRIGHTNESS)

To adjust the brightness of the LCD Monitor, follow the steps below.

1. Turn the Mode Dial to **SETUP**.
2. Press the ▼ button to select [LCD BRIGHTNESS] and press the OK or ► button.

The LCD Brightness Adjustment bar appears.

3. Press the ▲▼ buttons to adjust the brightness.

Moving it to the ☀ side makes it darker.

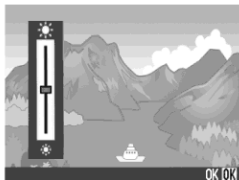
Moving it to the ☁ side makes it brighter.

The brightness of the screen behind the bar changes as you alter the setting.

4. When you attain the desired brightness, press the OK button.

The display returns to the SETUP screen.

This setting will be used until you change it.



Setting a Function to the ADJ. Button (ADJ BTN.SET.)

Each time the ADJ. button is pressed, the camera displays the setting screen in the order of exposure, white balance, and ISO sensitivity.

By using the [ADJ BTN.SET.] option, you can set a function to be activated when the ADJ. button is pressed the fourth time.

Possible Settings	(Refer to)
OFF *Initial setting at purchase	
QUALITY (PIC/QUALITY)	P.62
AF/MF (FOCUS)	P.64
SHARP (SHARPNESS)	P.68
PHOTOMETRY	P.67

To assign a function to the ADJ. button, follow the steps below.

1. Turn the Mode Dial to **SETUP**.
2. Press the **▼** button to select [ADJ BTN.SET.].
3. Press the **◀▶** buttons to select the desired setting.

This setting will be used until you change it.



Note

If a function is set with [ADJ BTN.SET], the AF target shift function (P.85) available from the ADJ. button at Macro shooting is activated when the ADJ. button is pressed the fifth time.



Reference

For how to use the ADJ. button, see P.59.

Changing the Beep Sound Setting (BEEP SOUND)

During operation, the camera generates four types of sounds: start sound, shutter release sound, focus sound, and beep sound.

Start sound	: Sound when the camera power is turned on.
Shutter release sound	: Sound when the shutter button is pressed.
Focus sound	: When the focus is set, the camera generates the focus sound.
Beep Sound	: If an impossible operation is attempted, the camera generates the beep sound.

Possible Settings

SHUTTER (Shutter and beep sounds only)
ON (all sounds on) *Initial setting at purchase
OFF (all sounds off)

To change the beep sound settings, follow the steps below:

1. Turn the Mode Dial to **SETUP**.
2. Press the ▼ button to select **[BEEP SOUND]**.
3. Press the ◀▶ buttons to select the **desired setting**.

This setting will be used until you change it.



Changing Image Confirmation Time (LCD CONFIRM.)

Immediately after pressing the shutter button, the still image taken is displayed for a moment so you can check it.

At purchase, Confirmation Time is set to one second, but this can be changed.

Possible Settings
OFF (Photo not displayed for confirmation)
1 Second *Initial setting at purchase
2 Seconds
3 Seconds

To change Confirmation Time, follow the steps below.

1. Turn the Mode Dial to **SETUP**.
2. Press the ▼ button to select [**LCD CONFIRM.**].
3. Press the ◀▶ buttons to select the desired setting.

This setting will be used until you change it



Changing Auto Power-Off Settings (AUTO POWER OFF)

If you do not operate the camera for the set period of time, it will shut off automatically (Auto Power-off) to conserve battery power.

At the time of purchase, Auto Power-Off is set to one minute, but you can change this setting.

Possible Settings
OFF (The Auto Power-Off function does not work)
1 Minute *Initial setting at purchase
5 Minutes
30 Minutes

To change the Auto Power-Off setting, follow the steps below.

1. Turn the Mode Dial to **SETUP**.
2. Press the **▼** button to select **[AUTO POWER OFF]**.
3. Press the **◀▶** buttons to select the **desired setting**.

This setting will be used until you change it.



Note

- When Auto Power-Off turns off the camera, just press the power button again to turn it on and resume use.
- The Auto Power-off function does not work when the camera is connected to a computer.
- When shooting with Interval Shooting, settings made here are not valid and Auto Power-Off does not work.

Changing File Name Settings (SEQUENTIAL NO.)

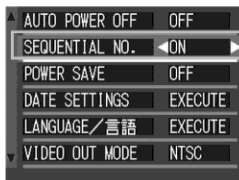
When you shoot a still image, it is stored on an SD Memory Card or in internal memory, with a consecutively numbered file name automatically assigned. When you are switching SD Memory Cards, you can set your camera to continue consecutive numbering from the previously loaded SD Memory Card.

Possible Settings	
ON (Continue numbering)	File names will be automatically assigned to still images you take, in the format of "M" followed by 7 digits, from M0010001.jpg to M9999999.jpg. With this setting, even when one SD Memory Card is switched with another, consecutive file numbering from the previous card is continued.
OFF (Do not continue numbering)	Every time a new card is loaded, file numbering is assigned, from IMAG0001.jpg to IMAG9999.jpg.
*Initial setting at purchase	If numbering exceeds IMAG9999, further recording is not possible

To make changes to file numbering, follow the steps below.

1. Turn the Mode Dial to **SETUP**.
2. Press the **▼** button to select **[SEQUENTIAL NO.]**.
3. Press the **◀▶** buttons to select the desired setting.

This setting will be used until you change it.




Note

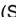

- When you are recording to internal memory, file names are assigned just as when [SEQUENTIAL NO.] is set to [OFF].
- When transferring images to a computer, if a file already exists with the same name in the destination folder, your image is renamed before saving to avoid overwrite problem.
- When transferring images to a computer via the provided USB cable, the files are assigned names like IMAG****.jpg (**** indicates the number of the image), even if [SEQUENTIAL NO] is set to ON.
- If IMAG9999 is exceeded, since a file number becomes insufficient, it is impossible to record more. In this case, please move the files in SD memory card to a personal computer and format it.

Changing Power-Save Mode Settings (POWERSAVE)

You can reduce the power consumption of the LCD Monitor and extend the life of your batteries.

The display on the LCD Monitor will turn off. Press the  (Quick Review) button or the MENU button to turn the LCD Monitor Display on, and then press them again to turn the display off.



Press the ADJ. button to turn the LCD Monitor on for setting. After the end of setting, the display returns to off.

You cannot turn the LCD Monitor Display on/off by pressing the  (Self-timer) or  (Macro) button.

At the time of purchase, Power-Save Mode is set to [OFF].

Possible Settings
OFF (Power-Save Mode Inactivated) *Initial setting at purchase
ON (Activate Power-Save Mode)


To change the Power-Save Mode, follow the steps below.

1. Turn the Mode Dial to **SETUP**.
2. Press the  button to select **[POWER SAVE]**.
3. Press  to select the desired setting.

This setting will be used until you change it.



Note

- If the power is turned on or the mode dial is turned in Power-Save mode, a warning appears for about two seconds to indicate Power-Save mode.
- Pressing the  (Flash) button allows you to turn the LCD Monitor Display on, and then change the flash setting. Press the shutter button or OK button to turn the LCD Monitor Display off.



Caution

If you have activated Power-Save mode, power consumption will be reduced, but there are the following limitations.

- Processing time may be slower.
- It works only in Shooting Mode. It does not work in Playback Mode.

Setting the Date and Time (DATE SETTINGS)

You can take still images with the time or date stamped onto the picture.

The date/time setting on the SETUP menu is explained here.

1. Turn the Mode Dial to **SETUP**.
2. Press the **▼** button to select **[DATE SETTINGS]** and then press the **OK** or **▶** button.
3. Set the year, month, date and time by pressing **▲▼◀▶**.

If you hold down the **▲▼** buttons, you can increase/decrease the value quickly.

4. In **[FORMAT]**, choose the Date and Time format.
5. Check the display on the bottom of the screen and then press the **OK** button.

Once you have set the date and time, the display returns to the Setup screen.



Note

If the batteries are removed for more than one week, the date and time settings will be lost. These settings must be made again.

Changing the Display Language (LANGUAGE/ 言語)

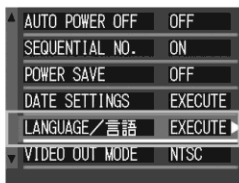
You can change the language displayed on the LCD Monitor.

Possible Settings
日本語 (Japanese)
ENGLISH (English) *Initial setting at purchase
DEUTSCH (German)
FRANÇAIS (French)
ITALIANO (Italian)
ESPAÑOL (Spanish)
简体中文 (Simplified Chinese)
繁体中文 (Traditional Chinese)
한국어 (Korean)

To change the display language, follow the steps below.

1. Turn the Mode Dial to **SETUP**.
2. Press the ▼ button to select **[LANGUAGE/ 言語]** and press the OK or ► button.
The language selection screen appears.
3. Press the ▲▼◀▶ buttons to select the desired setting.
4. Press the OK button.

This setting will be used until you change it.



Changing the Playback Method for Viewing on TV (VIDEO OUT MODE)

You can view your still images and movies on a television screen by connecting your camera to a television with the AV cable that came with your camera.

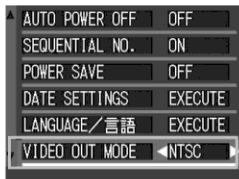
Your camera is set to NTSC video format (used in Japan and other countries) for use with television equipment, etc. If the equipment you want to connect to uses PAL format (used in Europe and elsewhere), then switch your camera to PAL format before connecting.

Possible Settings
NTSC *Initial setting at purchase
PAL

To change the playback format, follow the steps below.

1. Turn the Mode Dial to **SETUP**.
2. Press the **▼** button to select **[VIDEO OUT MODE]**.
3. Press the **◀▶** buttons to select the desired setting.

This setting will be used until you change it.



Note

Connecting the AV cable to the camera turns off the LCD monitor display.



Reference

For how to view still images on your television screen, see P.49.

Changing the Setting of Step Zooming (STEP ZOOM)

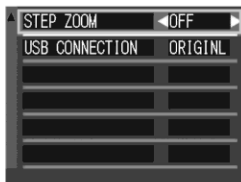
The focal length with optical zooming can be fixed to any of four levels (28, 35, 50 and 80 mm as converted equivalent to 35 mm cameras) (Step Zoom).

Possible Settings
OFF *Initial setting at purchase
ON

To set whether to use step zooming (ON) or not (OFF), follow the steps below.

1. Turn the mode dial to **SETUP**.
2. Press the ▼ button to select [STEP ZOOM].
3. Press the ◀▶ buttons to select a value.

This setting will be used until you change it.



Reference

For how to use zoom, see P.38.

Changing the USB Communication System (USB Connection)

Changing the USB Communication System (USB Connection)

If the USB communication system is changed (by selecting [MASTR] at [USB CONNECTION] on the Setup menu), files in the camera can be browsed and transferred from the camera to your computer through the USB cable without installing the accessory application or USB driver.

Usually, select [ORIGINAL]. When [ORIGINAL] is set, images can be transferred to your computer by using the attached DL-10.

Mode	Mass Storage	Original
Download Method	The SD memory card or built-in memory of the camera can be operated directly as an external drive for file processing.	DL-10 allows automatic transfer to your computer. The mounter allows transfer to your computer. (Mac OS)
Installation from CD-ROM	Unnecessary	Necessary
Supported OS		
Windows 98/98 SE	X	○
Windows 2000 Professional	○	○
Windows Me	○	○
Windows XP Home Edition	○	○
Windows XP Professional	○	○
Mac OS 8.6	X	○
Mac OS 9.0 to 9.2.2	○	○
Mac OS X 10.1.2 to 10.3	○	○
For those:	Familiar with OS file operations Not willing to install a USB driver or other	Willing to automate downloading to a computer Using Windows 98/98 Second Edition Using Mac OS 8.6



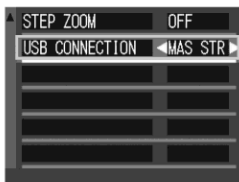
Caution

- At [MAS STR], DL-10 cannot be used for file transfer.
- At [MAS STR], files can only be read from the camera and cannot be written into or deleted from the camera.
- For direct printing on a printer supporting both Direct Print and PictBridge, select [ORIGINL] at [USB CONNECTION].

To change the USB communication system, follow the steps below:

1. Turn the mode dial to **SETUP**.
2. Press the **▼** button to select **[USB CONNECTION]**.
3. Press the **◀▶** buttons to select a value.

This setting will be used until you change it.



Reference

For how to transfer images by connecting the camera to your computer with the USB cable, see the Software User Guide.

To transfer images in Mass Storage Mode, follow the steps below:

1. Change [USB CONNECTION] to [MAS STR] on the Setup menu.
2. Make sure that the camera power is off.
3. Connect the accessory USB cable to a USB port of your computer.
4. Connect the USB cable to the USB terminal of the camera.

The camera power becomes on.

Your computer automatically reads a file necessary for recognizing the camera as a drive.



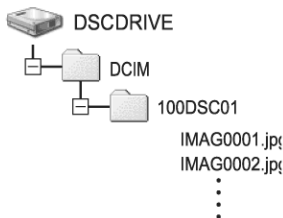
Example of the Windows XP screen

After this preparation, the camera is displayed as a drive at My Computer (Windows) or Desktop (Macintosh).

5. From the displayed drive, copy a file to the desired destination.

The figure at right shows the folder configuration in a drive.

When the contents of the built-in memory are displayed, the drive name is DSCINDRV.



Caution

During transfer, do not disconnect the USB cable.



Note

When a SD memory card is inserted, its files are displayed. Otherwise, files in the built-in memory are displayed.

Disconnecting the Camera from Your Computer (Windows)

This display is an example for Windows XP. The terms are different for other OS but the operations are the same.

1. Click the **Remove Hardware Safely** icon at the right end of the task bar.
2. Select **[USB Large-capacity Storage Device]** and click **[Stop]**.
3. Check that **[USB Large-capacity Storage Device]** is selected and click **[OK]**.
4. Click **[OK]**.
5. Unplug the USB cable.



Disconnect the Camera from Your Computer (Macintosh)

1. Put the displayed drive in the **Recycle Bin**.
2. Unplug the USB cable.

Chapter 4

Installing Software

Installing the Provided Software (For Windows) ..	130
Installing the Provided Software (For Macintosh)	141

Installing the Provided Software (For Windows)

You need to install software for transferring images to your computer before you can download images from the camera.

Software installation is necessary for automatic image downloading from the camera into your computer.



Note

To download images from the camera to your computer without any software installed, change the camera setting for [USB CONNECTION] (P.124).



Reference

For how to download images from the camera into your computer, see the Software User Guide available from the CD-ROM. For how to display the Software User Guide, see P.132.



Caution

Be sure to install the software before you connect the camera to your computer with the cable.



Software that can be installed from the CD-ROM

Once you insert the CD-ROM in the CD-ROM drive, the following screen appears automatically:



Item Name	Description	(Refer to)
Install Software	Use this button to install software required for handling the camera and images.	P.134
Browse Manual	Use this button to display the Software User Guide (PDF).	P.132
Browse CD-ROM	Use this button to display the list of files contained on the CD-ROM.	P.132

When [Install Software] is clicked: (P.134)

The following software will be installed:

Software	Windows		Description
	XP	98	
DL-10	<input type="radio"/>	<input type="radio"/>	Downloads images.
DU-10	<input type="radio"/>	<input type="radio"/>	Display images.
USB Driver	<input type="radio"/>	<input type="radio"/>	Connects the camera to your computer.
WIA Driver	<input type="radio"/>	-	Downloads images.
List Editor	<input type="radio"/>	<input type="radio"/>	Not used by this model but used by other models of camera.

XP: Windows XP

98: Windows 98/98SE/Me/2000

When [Browse Manual] is clicked:

The Software User Guide (PDF file) on the CD-ROM can be displayed on your computer screen. If you are a Windows user and have Acrobat Reader installed on your computer, simply double-click [Browse Manual]. If not installed, Acrobat Reader should be installed (see P.138).

Click [Browse CD-ROM].

You can check folders and files on the CD-ROM.

The CD-ROM contains not only the software but also the following software. These software products run on Windows.

For the installation of each software product, see the Reference page in the table below.

Software	Description	Refer to
Acrobat Reader	Required for viewing the Software User Guide.	P.138
DirectX	Necessary for playing movies by the DU-10.	P.139



Reference

- For details about the Acrobat Reader, see Help for the Acrobat Reader.

System Requirements for Using the Provided Software

The following environments are necessary for using the provided software. Please check your computer, or the computer's user manual.

Operating Systems Supported	Windows 98/98 Second Edition
	Windows 2000 Professional
	Windows Me
	Windows XP Home Edition/Professional
CPU	Pentium 2 or higher
Memory	Windows 98/98SE: 32MB or more (96MB or more recommended)
	Windows 2000: 128MB or more (256MB or more recommended)
	Windows Me: 64MB or more (96MB or more recommended)
	Windows XP: 128MB or more (256MB or more recommended)
Hard drive space required for installation	Windows 98/98SE: 10MB or more
	Windows 2000: 10MB or more
	Windows Me: 10MB or more
	Windows XP: 10MB or more
Display resolution	640 x 480 pixels or greater (800 x 600 or greater recommended)
Display colors	256 colors or greater (65000 or greater recommended)
CD-ROM drive	A CD-ROM drive compatible with the above-mentioned computer body
USB port	A USB port compatible with the above-mentioned computer body



Caution

- If your computer has an upgraded OS, the USB function may not work normally, so it cannot be supported.
- Problems may arise due to changes made to the OS, such as through patches or a service package release.
- The camera does not support connection to a USB port added by using an extension function (PCI bus or other).
- If used in conjunction with a hub or other USB devices, the software may not work properly.
- When dealing with movies and other large files, a larger memory environment is recommended.



Reference

For how to download images to your computer using an SD Memory Card, see the Software User Guide.

Installing the Software on Your Computer



Caution

- Do not connect your camera to the computer until indicated. If you happened to connect your camera to the computer (resulting in the [Add New Hardware Wizard] screen appearing), simply click [Cancel], and after disconnecting your camera, install the software on your computer.
- For Windows XP or Windows 2000, Administrator privileges are required to install the software.



Note

Here is an example of the Windows XP screen.

1. Start your computer and insert the CD-ROM in the CD-ROM drive.

The screen shown on the right appears automatically.



2. Click [Install Software].

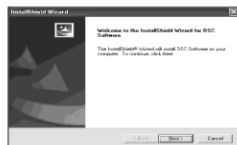
After a while, the [Select Setting Language] screen appears.

3. Confirm the language, and then click [OK].

After a few moments, the [Welcome to InstallShield Wizard] screen appears.

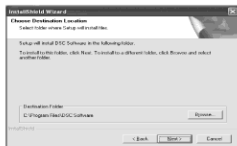
4. Click [Next].

After a few moments, the [Select Installation Destination] screen appears.



5. Confirm where you want to install and then click [Next].

The [Select Program Folder] screen appears.



6. Confirm where you want to install and then click [Next].
7. Click [Finish].
8. Restart your computer.



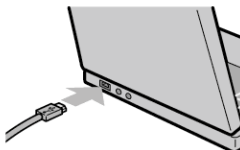
Reference

For how to remove (uninstall) the software, see P.140.

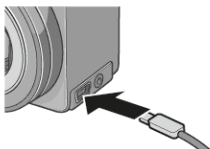
Connecting the Camera to Your Computer

After installing the software on your computer, connect your camera to it.

1. Make sure the camera power is off.
2. Connect the USB cable to the USB port of your computer.



3. Connect the USB cable to the USB terminal of your camera.
Your camera turns on.



For Windows XP

The first time you connect your camera to the computer using a USB cable, the [Found New Hardware Wizard] screen will appear.

1. Select [Install the software automatically (Recommended)].



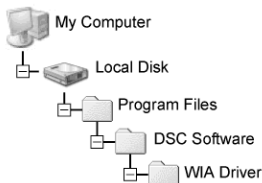
2. Insert the CD-ROM into the CD-ROM drive on your computer.

Installation of the WIA Driver automatically starts. If the CD-ROM is already on your computer when the [Found New Hardware Wizard] window is displayed, simply click [Next] to start installation.

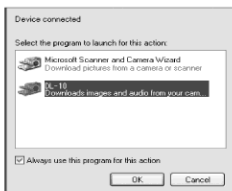


Note

By default, the WIA driver is installed in the following location:



3. Select [DL-10], check [Always use this program for this action] check box, and then click [OK].



To load images from the camera with assistance from the Windows XP Scanner and Camera Wizard, select [Scanner and Camera Wizard].

Leaving the [Always use this program for this action] check box unchecked will cause the [DSC 725] screen to be displayed each time you transfer images from the camera, thereby allowing you to choose whether to use DL-10 or the Scanner and Camera Wizard for image transfers.

If your PC is installed with Windows XP Service Pack2 and a warning message is displayed, see P.153.

Disconnecting the Camera from Your Computer:

1. Turn your camera off by pressing the power button.
2. Unplug the USB cable.



Note

- If connection fails, delete the software (see P.140) and install it again.
- It is recommended that you use the AC Adapter (sold separately) when you are downloading images from your camera.

Installing Acrobat Reader

Acrobat Reader is required to display the operation manual (PDF file).

If the computer is running under Windows, Acrobat Reader can be installed.

Acrobat Reader need not be installed if already installed on your computer.



Caution

- Do not install the software when the camera is connected to your computer with a USB cable.
- For Windows XP or Windows 2000, Administrator privileges are required to install the software.

1. Start your computer, and insert the included CD-ROM into the CD-ROM drive.

The following screen appears automatically.



2. Click [Browse CD-ROM].

The files on the CD-ROM are listed.

3. Double-click the [Acrobat] folder.

4. Double-click the [English] folder.

5. Double-click [ar500enu] (ar500enu.exe).

6. Install Acrobat Reader by following the messages displayed.

Installing DirectX

DirectX is a program to play a movie file by the DU-10. This camera requires DirectX 8.1 or later to play movie files in Windows. If you have an earlier version installed, please install the updated version available on the accompanying CD-ROM. For Windows XP, installation of DirectX is not needed because the updated version is already installed.



Caution

- Do not install the software when the camera is connected to your computer with a USB cable.
- For Windows XP or Windows 2000, Administrator privileges are required to install the software.

1. **Start your computer, and insert the included CD-ROM into the CD-ROM drive.**
2. **Click [Browse CD-ROM].**
3. **Double-click the [DirectX] folder.**
4. **Double-click the [English] folder.**
5. **Double-click the following file:**

Windows98/98SE/Me	[DX81xxx.exe] in the [Win98Me] folder
Windows2000	[DX81NTxxx.exe] in the [Win2000] folder

Uninstalling the Software



Caution

- For Windows 2000/XP, Administrator privileges are required to uninstall the software.
- If any other program is active or unsaved data remains, save the data and terminate the program before uninstalling.

1. Click **[Start]** on the Windows task bar.
2. Select **[Settings]-[Control Panel]** (**[Control Panel]** for XP).
3. Double-click the **[Add/Remove Programs]** icon (or the **[Add Or Remove Programs]** icon in Windows XP).
4. Select **[DSC Software]** and then click **[Change/Remove]**.
5. Confirm file deletion and click **[OK]**.
The **[Shared File Detected]** dialog box appears.
6. Select the **[Don't display this message again.]** check box, and then click **[OK]**.

The uninstallation process begins. When it is finished, close the displayed window.

Installing the Provided Software (For Macintosh)

You need to install software for transferring images to your computer before you can download images from the camera.



Reference

For how to download images from the camera into your computer, see the Software User Guide available from the CD-ROM. For how to display the Software User Guide, see P.142.



Caution

Be sure to install the software before you connect the camera to your computer with the cable.



Software that can be installed from the CD-ROM

Software	Mac		Description
	9	X	
DL-10	<input type="radio"/>	-	Downloads images.
USB Driver	<input type="radio"/>	<input type="radio"/>	Connects the camera to your computer.
Mounter	<input type="radio"/>	<input type="radio"/>	Connects the camera to your computer.

9: Mac OS 8.6 to Mac OS 9.2.2

X: Mac OS X 10.1.2 to 10.3

For Mac OS 8.6 to 9.2.2, double-click the [DSC Installer] icon to display the screen shown at right.



Item Name	Description	(Refer to)
DSC Software	Use this button to install software required for handling the camera and images.	P.144
Browse Manual	Use this button to display the Software User Guide (PDF).	P.142

When [Install Software] is clicked:

Now the software is installed.

When [View Software User Guide] is clicked:

The Software User Guide (PDF file) on the CD-ROM can be displayed on your computer screen.

If not installed, Acrobat Reader should be installed.

System Requirements for Using the Provided Software

The following environments are necessary for using the provided software.

Please check your computer, or the computer's user manual.

Operating System	Mac OS 8.6 to 9.2.2 / Mac OS X 10.1.2 to 10.3	
Macintosh	A USB port standard-equipped Apple Macintosh Series	
Internal Memory	Mac OS 8.6 to 9.2.2	96 MB or more (128 MB or more recommended)
	Mac OS X 10.1.2 to 10.3	128 MB or more (256 MB or more recommended)
Application Allocated Memory (For Mac OS 8.6 to 9.2.2)	Without using the compression utility, 16MB or more (24 MB or more is recommended) as Application Memory	
Hard Disc Drive Capacity	Mac OS 8.6 to 9.2.2	10 MB or more (at installation)
	Mac OS X 10.1.2 to 10.3	100 MB or more (at installation)
	100 MB or more (at operation)	
Display resolution	640 x 480 pixels or greater (800 x 600 or greater recommended)	
Display colors	256 colors or greater (32000 or greater recommended)	
CD-ROM drive	A CD-ROM drive compatible with the above-mentioned Macintosh machine	
USB port	A USB port compatible with the above-mentioned computer body	



Caution

- Problems may arise due to changes made to the OS environment setting.
- Connection to a USB port retrofitted using an extended function (PCI bus, etc.) cannot be supported.
- If used in conjunction with a hub or other USB devices, the software may not work properly.



Note

- When dealing with movies and other large files, a larger memory environment is recommended.
- For Mac OS 8.6 to 9.2.2, use a larger memory environment, as well as allocating extra application memory.
- While the software can be operated at 256 colors or more for the Display Color, it is strongly recommended that 32,000 or more be used.



Reference

For how to download images to your computer using an SD Memory Card, see the Software User Guide.

Installing the Software on Your Computer (Mac OS 8.6 to 9.2.2)

1. Turn on your Macintosh and insert the CD-ROM in the CD-ROM drive.

2. Select the OS 9 folder.

The [DSC Installer] icon appears.

3. Double-click [DSC Installer].

The "DSC Installer" window opens.



4. Click [DSC Software].

5. Click [OK].

6. Click [Install].

When installation finishes, a message appears to inform you that it is necessary to restart your Macintosh.



7. Click [Continue].

The software is installed and after a while the Installation Complete message appears.

8. Click [Restart].

Your Macintosh restarts.



Note

To remove (uninstall) the software:

To remove (uninstall) the software from your Macintosh, drag and drop the installed file into the Trash.

File Name	Folder Name
DL-10	System Folder: Control Panels
DL-10 Prefs	System Folder: Preferences
DSC Mounter	System Folder: Extensions
DSC Mounter Prefs	System Folder: Preferences
DSC USB Driver	System Folder: Extensions
DSC Lib	System Folder: Extensions

Installing the Software on Your Computer (Mac OS X 10.1.2 to 10.3)

1. Turn on your Macintosh and insert the CD-ROM in the CD-ROM drive.

2. Open the Mac OS X folder.

The [DSC Mounter.pkg] icon appears.

3. Double-click [DSC Mounter.pkg].

The Installer starts. A screen appears prompting you to enter the administrator's password.

4. Click the key icon.

An authentication window appears.



5. Enter the administrator's name and password, and then click [OK].



6. Click [Continue].

The [Select a Destination] screen appears.



7. Click the destination volume you want, and then click [Continue].



8. Click [Install].

When installation finishes, a message appears to inform you that it is necessary to restart your Macintosh.

9. Click [Continue Installation].

The software is installed, and after a while an Installation Complete message appears.



10. Click [Restart].

Your Macintosh restarts.



Note

To remove (uninstall) the software:

1. Start [DSC Mounter] in [Applications] folder.
2. Select [Uninstall] in [File] menu.

The uninstallation process begins.

Chapter 5

Troubleshooting

Troubleshooting	148
Appendices	155

Troubleshooting



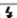
Troubleshooting the Camera

Power Supply


Symptom	Cause	Remedy	Refer to
The power does not come on.	Batteries are not loaded. Or they are exhausted.	Load the batteries correctly. Recharge or use the AC Adapter.	P.20 P.22
	The battery is unacceptable.	Replace the battery with an acceptable one.	P.17
	The AC Adapter is not connected correctly.	Reconnect it properly.	P.22
	The camera is automatically turned off by Auto Power-off.	Turn the power back on.	P.26
	The battery direction is wrong.	Insert the battery correctly.	P.20
The power cuts out during use.	The camera was left unattended and unused, so Auto Power-Off shut it off.	Turn the power back on.	P.26
	Batteries are running low.	If using alkaline batteries, replace the batteries with a new set. If using rechargeable batteries, recharge or use the AC Adapter.	P.17
	An unacceptable battery (manganese dry cell or other) is used.	Replace the battery with an acceptable one.	P.17
The power does not go off.	Camera malfunction.	Remove batteries once and load them again. Reconnect the AC adapter cable properly, if using.	P.20 P.22
Although the battery is new, a battery marking is displayed to indicate a low battery level. Although the battery is new, pressing the shutter release button retracts the lens. Although the battery is new, pressing the shutter release button turns the power off.	An unacceptable battery (manganese dry cell or other) is used.	Replace the battery with an acceptable one.	P.17
Cannot recharge the batteries.	Battery life.	Replace the batteries with a new set.	P.17
Batteries run out quickly.	They are being used in extreme high or low temperatures.	-	-
	Many shots are being taken in dark places inside, requiring flash.	-	-

Shooting

Symptom	Cause	Remedy	Refer to
The camera does not shoot even if you press the shutter release button.	Batteries are not loaded. Or they are exhausted.	If using alkaline batteries, replace the batteries with a new set. If using rechargeable batteries, recharge or use the AC Adapter.	P.20 P.21 P.22
	The power is not on. Or the camera is not in Shooting Mode.	Turn the power on and turn the Mode Dial to Shooting Mode.	P.26
	The shutter button is not pressed all the way.	Press the shutter button all the way.	P.33 P.34
	The Memory Card is not formatted.	Format the card.	P.111
	The Memory Card does not have any free space.	Load a new card, or delete unwanted files.	P.25 P.51
	End of Memory Card life.	Load a new memory card.	P.25
	The flash is recharging.	Wait until the flash lamp stops blinking.	P.40
	The SD Memory Card is "locked".	Release the "Lock (write-protection)".	P.24
	The SD Memory Card's contact surfaces are dirty.	Wipe off with a soft, dry cloth.	-
Failed to confirm the shot image.	The image confirmation time is too short.	Lengthen the image confirmation time.	P.116
Images do not appear on the LCD Monitor.	The power is not on. Or the LCD Monitor is dark.	Turn the power on. Or adjust the brightness of the LCD Monitor.	P.26 P.113
	The VIDEO/AV cable is connected.	Disconnect the VIDEO/AV cable.	P.49
	The screen display status is in [SYNCHRO-MONITOR MODE].	Press the DISP. button and switch display.	P.29
	It is set to [Power-Save].	Set [Power-Save] to off.	P.119
Although it is set to Auto Focus, it does not focus.	The lens or AF Window is dirty.	Wipe clean with a soft, dry cloth.	P.12
	The subject is not in the center of the shooting range.	Shoot with Focus Lock.	P.36
	It is a hard-to-focus subject.	Shoot with Focus Lock or Manual Focus.	P.36 P.64
A picture is blurred.	You moved the camera when pressing the shutter release button.	Hold the camera with your elbows tight on your body. Or use a tripod.	P.31
	When shooting in a dark place (ex. indoor), the shutter speed slows down and pictures become easily blurred.	Use the flash. Or, raise the ISO sensitivity.	P.40 P.81

Symptom	Cause	Remedy	Refer to
The flash does not fire. Or the flash cannot recharge.	Flashing is prohibited in the following statuses: - White Balance Bracket enabled - Continuous Shooting Mode - Movie Mode In some Scene Modes, flashing may be prohibited by default. (see P.157)	For shooting with the flash, change the settings or mode.	P.70 P.90 P.94 P.157
	The flash is set to Flash Off.	Deselect the Flash Off with the  button.	P.40
	Batteries are running low.	If using alkaline batteries, replace the batteries with a new set. If using rechargeable batteries, recharge or use the AC Adapter.	P.17
Even though the flash fired, the picture is dark.	The distance to the subject is greater than 2.9 meters in Telephoto or greater than 5.0 meters in Wide-angle.	Get closer to your subject and shoot.	P.40
	The subject is dark.	Correct exposure. (Exposure correction also changes the light quantity of the flash.)	P.78
The image is too bright.	The light quantity of the flash is not appropriate.	Move a little away from the subject or light up the subject for shooting without flashing.	P.40
	It is over-exposed.	Use exposure compensation. Cancel Exposure Time.	P.72 P.78
	The brightness of the LCD monitor is not appropriate.	Adjust the brightness of the LCD Monitor.	P.113
The image is too dark.	The shot was taken in a dark place while set to  (Flash Off).	Deselect the Flash Off with the  button.	P.40
	It is under-exposed.	Use exposure compensation. Set to Exposure Time.	P.72 P.78
	The brightness of the LCD monitor is not appropriate.	Adjust the brightness of the LCD Monitor.	P.113
The image lacks natural color.	The picture was shot in conditions that are hard for Auto White Balance to adjust to.	Add a white object to the composition. Or use a White Balance setting other than Auto.	P.79
The date, or recording information does not appear.	The screen display function is set to No Display.	Press the DISP. button and switch display.	P.29
The brightness of the LCD Monitor changes during AF.	You are using it in a dark place or when Auto Focus range and surrounding brightness are different.	This is normal.	-
There is a vertical smear on the image.	This is a phenomenon that occurs when a bright subject is shot. It is called the smear phenomenon.	This is normal.	-


Playback/Deleting

Symptom	Cause	Remedy	Refer to
Cannot Playback. Or the Playback screen does not come out.	The camera is not in Playback Mode.	Turn the Mode Dial to  (Playback Mode).	P.45
	The VIDEO/AV cable is not connected properly.	Reconnect it properly.	P.49
	The video format is set wrong.	Set to correct format.	P.122
The contents of SD Memory Card cannot be replayed. Or the Playback screen does not come out.	No memory card is loaded. Or a Memory Card with no stored images is loaded.	Load a card with stored images.	P.25
	You played back a Memory Card that was not formatted by this device.	Load a card that was formatted and stored on by this device.	P.25 P.111
	You played back a Memory Card that was not recorded normally.	Load a normally recorded card.	-
	The SD Memory Card's contact surfaces are dirty.	Wipe off with a soft, dry cloth.	-
	There is something wrong with the Memory Card.	Play another card and if there is nothing wrong with it, the camera is OK. There may be something wrong with the card, so do not use it.	-
An image disappeared.	Batteries are running low.	If using alkaline batteries, replace the batteries with a new set. If using rechargeable batteries, recharge or use the AC Adapter.	P.17
	The camera was left unattended and unused, so Auto Power-Off shut it off.	Turn the power back on.	P.26
Files cannot be deleted.	The file has been set to protect.	Release the protection.	P.100
	The SD Memory Card is "locked".	Release the "Lock (write-protection)".	P.24
Cannot format a Memory Card.	The SD Memory Card is "locked".	Release the "Lock (write-protection)".	P.24

About Software

For details about the software, see Software User Guide (PDF file).

Other Problems

Symptom	Cause	Remedy	Refer to
Cannot load the Memory Card.	The card is facing the wrong way.	Load correctly.	P.25
Even when the camera's buttons are pressed, it does not operate.	Batteries are running low.	If using alkaline batteries, replace the batteries with a new set. If using rechargeable batteries, recharge or use the AC Adapter.	P.20 P.21 P.22
	Camera malfunction.	Turn the power off once, turn it back on and switch to  (Still Image).	P.26
		Remove batteries once and load them again. Reconnect the AC adapter cable properly, if using.	P.20 P.21 P.22
The date is wrong.	The correct date/time are not set.	Set the correct date/time.	P.120
The date set has disappeared.	The batteries were removed.	If the batteries are removed for about one week, the date setting will be lost. Make the settings again.	P.120
Auto Power-Off does not work.	Auto Power-Off is set to OFF.	Set the time for Auto Power-Off.	P.117
The beep does not sound.	The camera is set to silent.	Set the beep to ON.	P.115
Images do not appear on the TV.	The video format is set wrong.	Set to correct format.	P.122
	The cable is not connected.	Reconnect the cable properly.	P.49
	The TV in/out switch is incorrectly set.	Check that the TV in/out switch is set correctly.	-

Warning Messages Under Windows XP Service Pack 2

When software for digital camera is used on a PC with Windows XP Service Pack 2 installed, the following warning message may appear at software activation or USB connection.

With this in mind, refer to the following:

1. Check the information provided on the message screen to make sure that it comes from a reputable source, and then click the [Unblock] button.



Caution

If you do not recognize the program, you should block it because it may be a virus. Click the [Keep Blocking] button to prevent the program from connecting to the Internet.

If you clicked the [Keep Blocking] button:

Follow the steps below to check to see the Windows Firewall settings.

1. Click [Start] and then [Control Panel].

2. Double-click [Windows Firewall].

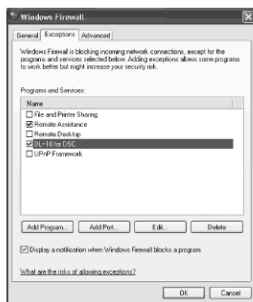
If [Windows Firewall] is not displayed, click [Switch to Classic Display] at the upper left of the window.



3. Click the [Exceptions] tab.

4. Check that the software is in [Programs and Services].

5. Click the [Add Program] button to add software that uses the network.



If you clicked the [Ask Me Later] button:

Each time the program is activated, the [Critical Warning about Windows Security] window appears. Then you can select [Unblock].

Appendices

A. Specifications

General

Video Signal Format	NTSC, PAL
Power Source Voltage	AA Dry Alkaline Batteries (1.5 V) X 2 Rechargeable Battery (3.7 V) X 1 External Part (AC Adapter); 3.8 V
External Dimensions Weight	113.6mm (W) x 58.0mm (H) x 29.0mm (D) (excluding projecting parts)
Weight	Camera: Approximately 205 g (Excluding the battery, SD memory card, and strap)
Operating Temperature Range	0 °C to 40 °C
Operating Humidity Range	85% or less
Storage Temperature Range	-20 °C to 60 °C

Camera Parts

Image Pickup Used	Total 8.50 million pixels (effective pixels 8.24 million)
Lens	
• Lens	F2.5 to 4.3
• Focal Length	F: 5.8 to 17.4 mm (35 mm equivalent, 28 to 85 mm)
• Shooting distance	Approximately 0.3 m to ∞ from the front of the lens
• Macro shooting distance	Approximately 0.01 m to ∞ (Wide) or 0.1 m to ∞ (Tele) from the front of the lens
• Digital Zoom	4.0 times
Monitor Display Parts	
• Screen Size	1.8"
• Type	Cold polysilicone TFT LCD
• Pixel Count	Approx. 130,000
• White Balance	AUTO/Fixed (Daylight, Overcast, Tungsten light, Fluorescent light, One Push)
Exposure Adjustment	
• Light Metering Sensitivity Distribution	Multi Light Metering (256 segments), Center-weighted Light Metering, Spot Metering
• Exposure Compensation	Exposure Compensation +/-2.0EV (1/3EV Steps)
• Metering Method	TTL-CCD Metering Method
• Flash AE	Yes (In Daylight Synchro: On)
• Shutter	Still image: 30, 15, 8, 4, 2, 1 to 1/2000 seconds Movie: 1/30 to 1/2000 seconds

• ISO Sensitivity	AUTO, ISO64, ISO100, ISO200, ISO400, ISO800, ISO1600
Distance Control	
• AF Method	Normal Shooting: External Passive / CCD method; Macro: CCD method
• AF Measurement Range	Normal: approx. 0.3 m - infinity. Macro: approx. 0.01 m - infinity
Internal Flash	
• Method	Flashmatic
• Shooting Distance	Approx. 0.2 to 5.0 m (W), Approx. 0.15 to 2.9 m (T) (ISO:AUTO)
• Operating Modes	Flash Off/Forced flash/Auto/Slow synchro/Red-eye reduction
• Date Maintain Time	Approx. 1 week

Image Data Record/Replay Part

Pixels

• Still Images	3264 X 2448, 2592 X 1994, 2048 X 1536, 1280 X 960, 640 X 480
• Text	3264 X 2448, 2048 X 1536
• Movies	320 X 240, 160 X 120

File Formats

• Still Images	Compressed; JPEG (Exif Ver.2.21), TIFF (Non-Compressed YUV)
• Text	TIFF (MMR Method ITU-T.6)
• Movies	AVI (Open DML Motion JPEG Format Compliant)
• Sounds	WAV (Exif Ver.2.21 μ law)
Camera File System Standard	DCF (DCF is an abbreviation for "Design rule for Camera File system", a JEITA standard)
Compression Format	JPEG Baseline Format Compliant (Still, Movie)

Image Size

• 3264 X 2448	N; approx. 1665 KB/Screen, F; approx. 2894 KB/ Screen, NC; approx. 15.2 MB/ Screen
• 2592 X 1944	N; approx. 1060 KB/Screen
• 2048 X 1536	N; approx. 672 KB/Screen
• 1280 X 960	N; approx. 326KB/Screen
• 640 X 480	N; approx. 83KB/ Screen

I/O Terminals

DC In	3.8 V (AC Adapter)
Video Out	1.0 Vp-p (75 Ω)
Serial output	USB Conforming to 2.0

Memory Cards that can Record, Playback

Memory Type	SD Memory Card, Multi-Media Card
-------------	----------------------------------

B. Optional Accessories

The Camera can be used with the items (sold separately) listed below.

Item	Remarks
AC Adapter	Used for power supply from a home outlet to the camera.
Rechargeable Battery	Available for this camera.
Battery Charger	This is a special high-speed (rechargeable) battery charger.




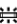

C. Combination of Scene Mode and Function

Depending on the Scene Mode, the way functions work may differ from when in normal shooting mode. Refer to the table below.




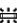

Mode Name	Flash	Macro Shooting
PORTRAIT	Initial setting: Flash Off	Disabled
SPORTS	Initial setting: Flash Off	Disabled
LANDSCAPE	Fixed on Flash Off	Disabled
NIGHTSCAPE	Forced flash is disabled	Disabled
	Initial setting: Auto	
TEXT MODE	Fixed on Flash Off	Enabled
HIGH SENSITIVITY	Fixed on Flash Off	Enabled

D. Menu Items By Mode

Shooting Menu (Movie Mode)

Setting	Option	Refer to
Movie Size	[320], 160	P.62
Focus	[AF], MF, SNAP, ∞	P.64
White Balance	[AUTO],  (Daylight),  (Overcast),  (Tungsten light),  (Fluorescent light),  (One Push)	P.79

Shooting Menu (Scene Mode, except in Text Mode)

Setting	Option	Refer to
Pic Quality/Size	NC3264, F3264, [N3264], N2592, N2048, N1280, N640	P.62
Focus	[AF], SNAP, ∞ (except in Landscape)	P.64
Image With Sound	ON, [OFF]	P.76
Date Imprint	[Off], Date, Date and Time	P.77
Exposure Comp.	-2.0 to +2.0	P.78
White Balance	[AUTO],  (Daylight),  (Overcast),  (Tungsten light),  (Fluorescent light),  (One Push)	P.79

Shooting Menu (Text Mode)

Setting	Option	Refer to
Density	Deep, [Normal], Light	P.84
Size	3264, [2048]	P.62
Image With Sound	ON, [OFF]	P.76
Date Imprint	[Off], Date, Date and Time	P.77

E. Functions Whose Defaults will be Restored upon Power-off

Power-off may reset some function settings to their defaults. The table below indicates whether or not the function will be reset to its defaults upon power-off.

Mode	Function	The current setting is kept: O, Restored: X
SETUP	LCD BRIGHTNESS	O
	ADJ. BUTT. SET.	O
	BEEP SOUND	O
	LCD CONFIRM.	O
	AUTO POWER OFF	O
	SEQUENTIAL NO.	O
	POWER SAVE	O
	DATE SETTINGS	O
	LANGUAGE	O
	VIDEO OUT MODE	O
	STEP ZOOM	O
	USB CONNECTION	O
Shooting	PIC QUALITY/SIZE	O
	MOVIE SIZE (Movie Mode)	O
	SIZE (Text Mode)	O
	DENSITY (Text Mode)	O
	FOCUS	O
	PHOTOMETRY	O
	SHARPNESS	O
	CONT. MODE	X
	AUTO BRACKET	X
	TIME EXPOSURE	O
	MANUAL EXPOSURE	O
	INTERVAL	X
	IMAGE WITH SOUND	X
	DATE IMPRINT	O
	EXPOSURE COMP.	O
	WHITE BALANCE	O
	ISO SETTING	O
	COLOR DEPTH	O

Mode	Function	The current setting is kept: O, Restored: X
	APERTURE SETTING	O
	Self-timer	X
	Flash	O
	Macro shooting	X
	LCD screen display	Other than Synchro-Monitor Mode: O, Synchro-Monitor Mode: X
	SCENE Mode	O
Playback	LCD screen display	O
	Volume	O

F. Number of Images That Can be Stored in Internal Memory/SD Memory Card

The following table shows the approximate number of images that can be recorded onto an SD memory card at various image size and picture quality settings.

Mode	Picture Quality	Image Size	IN	32MB	64MB	128MB	256MB	512MB	1GB
Still Image	NC	3264 X 2448	1	1	3	7	15	32	61
	F	3264 X 2448	8	9	19	39	78	158	305
	N	3264 X 2448	14	16	33	68	136	275	530
	N	2592 X 1944	23	25	53	107	213	430	828
	N	2048 X 1536	36	41	84	170	339	683	1314
	N	1280 X 960	64	72	148	301	600	1209	2324
	N	640 X 480	280	315	645	1304	2599	5237	10072
TEXT MODE		3264 X 2448	52	59	121	244	487	982	1889
		2048 X 1536	88	99	203	412	821	1654	3181
Movie		320 X 240	39 s	44 s	1 min. 31 s	3 min. 4 s	6 min. 7 s	12 min. 19 s	23 min. 42 s
		160 X 120	2 min. 27 s	2 min. 46 s	5 min. 40 s	11 min. 28 s	22 min. 50 s	46 min. 1 s	88 min. 31 s
Sound (Voice Memo)			57 min. 26 s	64 min. 36 s	132 min. 11 s	267 min. 15 s	532 min. 36 s	1073 min.	2063 min. 25 s



Note

- The number of remaining shots displayed on the LCD monitor may differ from the actual number of shots, depending on the subject.
- The maximum number of pictures and other numeric values may be different even for cards of the same capacity if the manufacturer, type, or shooting conditions are different.
- The continuous shooting (recording) time depends on the card type, capacity, and performance.

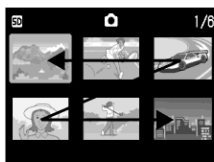
G. Up/down Dial Functions

The up/down dial has the following functions:

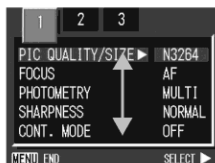
For Scene Mode selection on the SCENE selection screen.



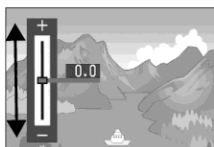
For image selection on the thumbnail display screen.



For switching between screens and between items on the shooting/playback/SETUP menu.



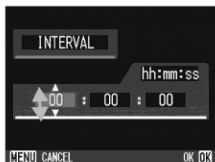
For how to change settings of exposure compensation.



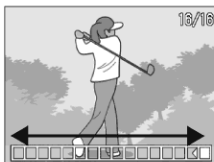
For how to change settings of white balance.



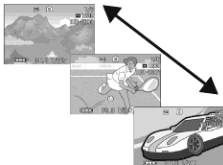
For how to change settings of interval shooting.



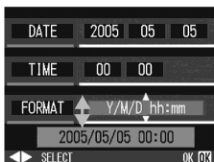
For frame feeding in SCNT or MCONT.



For how to switch between files.



For how to change the date and time setting.



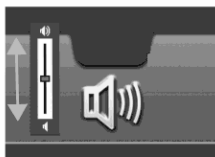
For how to change the magnification of enlarged display screen at still image playback.



For how to change the LCD brightness.



For volume adjustment.



For how to select a language on the display language setting screen.



H. Using Your Camera Abroad

AC Adapter

Can be used in regions with a current of 120V, 50Hz/60Hz.

If you are going to travel to a country that uses a different shaped wall outlet/plug, please consult your travel agent on a plug adapter suitable for wall outlets in your country of destination.

Warranty

This product is for domestic use. The warranty is only valid domestically.

Should the product fail or malfunction while you are abroad, the manufacturer assumes no responsibility for servicing the product locally or bearing the expenditure incurred therefore.

Using Playback on Television in other Regions

Playback is possible on televisions (or monitors) equipped with a video input terminal. Please use the video cable provided.

This camera is compatible with both NTSC and PAL television formats. Switch the video format on the camera to match the television environment in the region.

When you go overseas, set your camera to the local video format.

I. Cautions on Use

- This product is for domestic use. The warranty is only valid domestically.
- Should the product fail or malfunction while you are abroad, the manufacturer assumes no responsibility for servicing the product locally or bearing the expenditure incurred therefore.
- Be sure not to drop or apply any sudden force to the camera.
- Firing the flash consecutively may heat the firing unit. Do not fire it consecutively more than necessary.
- Do not fire the flash near eyes. It could cause visual impairment (particularly for infants).
- Do not fire the flash near the driver of a vehicle to avoid causing accidents.
- The batteries may become hot after extended use. Touching the batteries immediately after use could result in burns to your fingers.
- If the LCD monitor or panel is exposed to sunlight, they may become washed out and images may become hard to view.
- The LCD monitor and panel may contain some pixels that do not remain lit up continually in part or at all. Also, the brightness may become uneven because of the characteristics of LCDs. These are not failures.
- While you are carrying the camera, be careful not to hit it against other objects.
- In an environment where the temperature changes suddenly, condensation may occur in the camera, resulting in troubles such as fogging of the glass surface or malfunctions of the camera. If this occurs, place the camera in a bag to slow the temperature change as much as possible. Take it out of the bag after the temperature difference from the atmosphere has decreased to a fairly small amount.
- To avoid damaging the connectors, do not put any objects into the camera's microphone or speaker holes.



Note

Conditions in which condensation may easily occur:

When the camera is moved to an environment where the temperature differs greatly.

- In humid places
- In a room immediately after being heated, or when the camera is exposed directly to cooled air from an air-conditioner or other similar appliance.

J. Care and Storage

Care

- Please note that if fingerprints, dirt, etc. get onto the lens, picture quality will suffer.
- When dust or dirt does get on the lens, do not touch it directly with your fingers, and either use a blower (available in stores) to blow it off, or a soft cloth to gently dust it off.
- After use at the beach or around chemicals, wipe it off particularly carefully.
- There are high voltage circuits in this camera. As this is dangerous, do not dismantle this camera under any circumstances.
- Do not get volatile substances, such as thinner, benzene, or pesticides on your camera. This may cause a change in quality, paint to peel, etc.
- As the surface of the LCD Monitor is easily scratched, do not rub hard objects against it.
- Please clean the surface of the LCD Monitor with solvents available on the market specially for cleaning LCD display surfaces. Gently wipe with a soft cloth dampened with a little cleaner.

Storage

- Please avoid storing your camera in the following kinds of places, as breakdown may result.
 - In high heat and humidity, or where there is severe change in temperature or humidity.
 - Places with a lot of dust, dirt or sand.
 - Places with severe vibration.
 - In places of direct contact with vinyl products, rubber or chemicals, such as insect repellent, etc.
 - Places with strong magnetic fields (monitors, next to strong magnets, etc.).
- If you are using a battery or batteries, remove them if you are not going to use the camera for a long period of time.

Precautions regarding care of your camera

1. Be sure to turn the power off.
2. Remove the batteries or AC Adapter before caring for your camera.

K. Error Messages

If an error message is displayed on the LCD Monitor, take the corresponding action.

Error Message	Cause and Action	Page
INSERT CARD	No card is loaded. Insert a card.	P.25
SET DATE	The date is not set. Set the date.	P.120
FILE NUMBER OVER	The file number limit has been exceeded. Please use another card, or delete unwanted files.	P.118
UNMATCHED FILE	The camera cannot display this file. Check the file contents on your computer, and then delete the file.	-
INSUFFICIENT MEMORY. CONTINUE?	Because there is not sufficient capacity on the card, all the files cannot be copied. Use another card.	P.24
PROTECTED	You are trying to delete a protected file.	P.100
THE CARD IS WRITE- PROTECTED.	The card is "Locked (write-protection)". Unlock the card.	P.24
PRINT SETTINGS CANNOT BE SET FOR THIS FILE	This file (movies and other) cannot be selected for printing.	-
INSUFFICIENT MEMORY	Files cannot be stored. Make sure there is enough free space, or delete files.	P.51, P.111, P.112
	The image print number limit has been exceeded. Select an image and set the number to 0.	-
FORMAT INTERNAL MEMORY	It is necessary to format internal memory.	P.112
FORMAT CARD	The card is not formatted.Format the card.	P.111
CARD ERROR	Please reformat. If, after doing so, the error message still appears, the card may be faulty. Do not use the card.	P.111
WRITE TO CARD	Writing file to memory. Wait until writing finishes.	-
NO FILE	There are no files that can be played back.	-
CANNOT RECORD	The Number of remaining shots is 0. Switch to another card or internal memory.	-

Index

A

A/M	14
AC Adapter	11
Acrobat Reader	132
ADJ BTN.SET	114
ADJ. Button	59
Auto Bracket	69
AUTO POWER OFF	117
Auto Power Off	26
AV Cable	10, 49

B

BEEP SOUND	115
Browse CD-ROM	132

C

CARD FORMAT	111
CD-ROM	11
CONT (Multi-Shot)	90
COPY TO CARD	107

D

DATE IMPRINT	77
DENSITY	84
Digital Zoom	38
Direct Print	54
DirectX	132
DL-10	141
DPOF	103

E

Erasing	51
Error Message	166
EXPOSURE COMP.	78

F

Flash	40
FOCUS	64
Focus-lock	36
Full-press	33

G

Grid Guide	29
------------	----

H

Half-press	34
Handstrap	10
How to Hold the Camera	31

I

Image Size	62
IMAGE WITH SOUND	76
IN FORMAT	112
INTERVAL	74
ISO SETTING	81

L

LCD BRIGHTNESS	113
LCD CONFIRM.	116

M

Macro-Mode	39
Magnifying Images	48
Mounter	141
M (Memory-reversal) Multi-Shot	90

N

Number of Images That Can be Stored in Internal Memory/SD Memory Card	160
---	-----

P

Packing List	10
PHOTOMETRY	67
PIC QUALITY/SIZE	62
PictBridge	54
Picture Quality Mode	62
PROTECT	100

R

Rechargeable Battery	11
RESIZE	106
RESTORE DEFAULTS	83

S

Scene	43
SD Memory Card	24
Self-timer	86
SEQUENTIAL NO.	118
Sharpness	68
Shooting Menu (Movie Mode)	158
SLIDE SHOW	99
Specifications	155
Synchro-Monitor Mode	29
S (Stream) Multi-Shot	90

T

Thumbnail Display	47
TIME EXPOSURE	72
Trouble	148
Troubleshooting	148

U

Uninstalling	140
USB Cable	10
USB Driver	131, 141

V

Voice Memo	96
------------------	----

W

WAV file	96
White Balance	79
White Balance Bracket	70
WIA Driver	131

Z

Zoom	38
------------	----