



## Advanced Functionality Settings

### Setting DATE

**SETUP**

DATE TYPE

DATE

TIME 2004/1/30

IMPRINT

BACK:◀ SET:OK

With this setting, you can adjust the date.

**Operation Steps**

1. MENU
2. ▲ or ▼
3. ▶
4. ▲ or ▼
5. ▶
6. ▲ or ▼
7. ▶
8. ▲ or ▼
9. ▶
10. OK

### Setting TIME

**SETUP**

DATE TYPE

DATE

TIME 12:58

IMPRINT

BACK:◀ SET:OK

With this setting, you can adjust the time.

**Operation Steps**

1. MENU
2. ▲ or ▼
3. ▶
4. ▲ or ▼
5. ▶
6. ▲ or ▼
7. ▶
8. OK

### Setting IMPRINT(Default: Off)

**SETUP**

DATE TYPE

DATE

TIME OFF

IMPRINT ON

BACK:◀ SET:OK

This function allows you to print out the images with date.

**Operation Steps**

1. MENU
2. ▲ or ▼
3. ▶
4. ▲ or ▼
5. ▶
6. ▲ or ▼
7. OK

### Setting BEEP(Default: On)

**SETUP**

BEEP

VIDEO ON

Q. VIEW OFF

RESET

BACK:◀ SET:OK

**Operation Steps**

1. MENU
2. ▲ or ▼
3. ▶
4. ▲ or ▼
5. ▶
6. ▲ or ▼
7. OK

32

122mm+-2



## Advanced Functionality Settings

### Setting VIDEO(Default: NTSC)

**SETUP**

BEEP

VIDEO NTSC

Q. VIEW PAL

RESET

BACK:◀ SET:OK

NTSC: U.S.A, Canada, Japan, South Korea, Taiwan, Mexico.

PAL : Australia, Austria, Belgium, China, Denmark, Finland, Germany, U.K., Holland, Italy, Kuwait, Malaysia, New Zealand, Singapore, Spain, Sweden, Switzerland, Thailand, Norway.

**Operation Steps**

1. MENU
2. ▲ or ▼
3. ▶
4. ▲ or ▼
5. ▶
6. ▲ or ▼
7. OK

### Setting QUICK VIEW(Default: 1 Second)

**SETUP**

BEEP

VIDEO

Q. VIEW OFF

RESET

BACK:◀ SET:OK

If Q. View is on, you can view the image you just captured on the LCD monitor.  
 If OFF: You cannot view the picture you just take in the LCD monitor.  
 1~3 sec: The captured image is briefly displayed during the selected time.

**Operation Steps**

1. MENU
2. ▲ or ▼
3. ▶
4. ▲ or ▼
5. ▶
6. ▲ or ▼
7. OK

### Setting RESET(Default: No)

**SETUP**

VIDEO

Q. VIEW

RESET NO

S. BEEP YES

BACK:◀ SET:OK

This function allows you to recall all default values except the Date, Time, Language, and Video Out.

**Operation Steps**

1. MENU
2. ▲ or ▼
3. ▶
4. ▲ or ▼
5. ▶
6. ▲ or ▼
7. OK

### Setting START-UP BEEP

**SETUP**

VIDEO

Q. VIEW

RESET ON

S. BEEP OFF

BACK:◀ SET:OK

**Operation Steps**

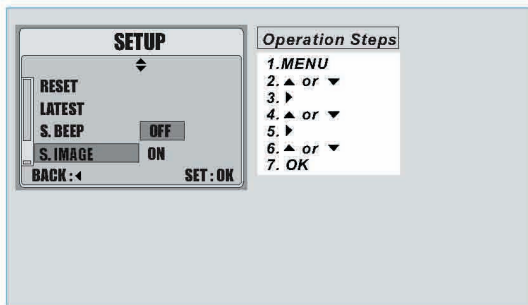
1. MENU
2. ▲ or ▼
3. ▶
4. ▲ or ▼
5. ▶
6. ▲ or ▼
7. OK

33



## Advanced Functionality Settings

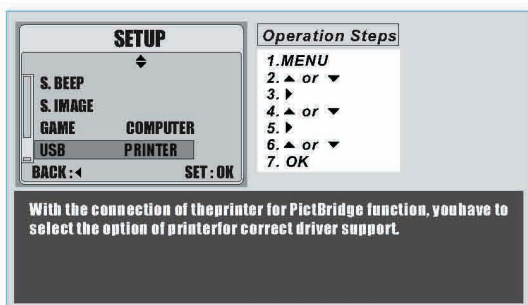
### Setting START-UP IMAGE( Factory Default Setting)



This functions is associated with the setting -- S. Image under Playback Mode.

1. Go to S. Image under Playback Mode to select an image as your default Start-up image.  
Please refer to Page 27 (S. Image)
2. Set up Start-up IMAGE under SET Mode to be ON.
3. Turn off your camera.
4. Turn on your camera again and you will see the image you selected as the Start-up image.

### Setting USB



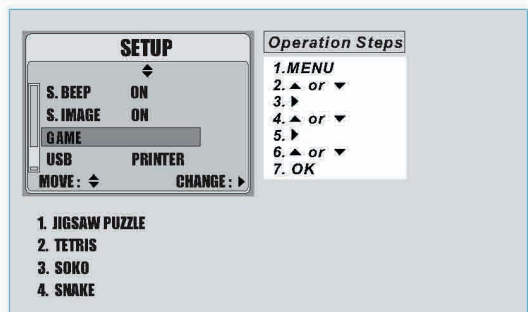
34

122mm+-2



## Advanced Functionality Settings

### How to Play Games



#### 1. JIGSAW PUZZLE

UP, DOWN, RIGHT, LEFT Buttons -- to manipulate  
TFT LCD Button -- to show the original picture  
Shutter Button -- to escape the game

#### 2. TETRIS

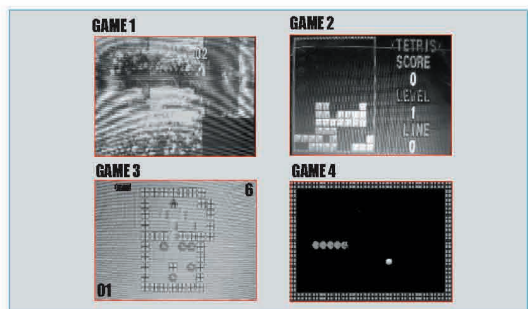
UP Button - to rotating the brick  
DOWN Button -- to speeding up the falling brick  
Shutter Button -- to escape the game

#### 3. SOKO

TELE/WIDE - to select the game level  
UP, DOWN, RIGHT, LEFT Buttons - to manipulate  
TFT LCD Button -- to show the current game level and scores  
DELETE Button -- to undo one movement  
MENU -- to restart the game  
Shutter Button -- to escape the game

#### 4. SNAKE

UP, DOWN, RIGHT, LEFT Buttons -- to manipulate  
Shutter Button -- to escape the game



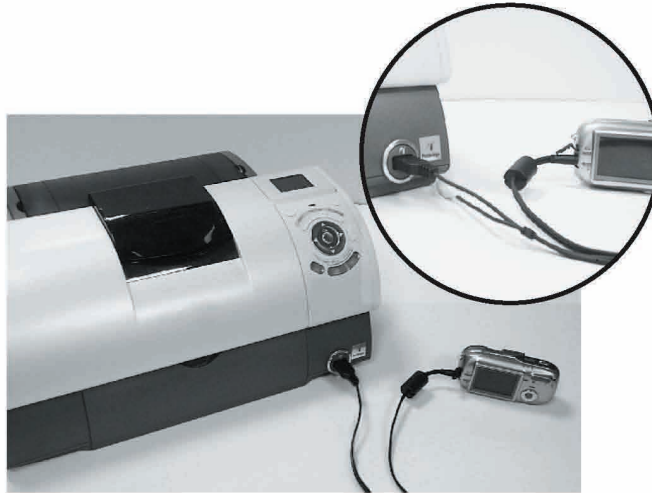
35



## Printer Connection (PictBridge Mode)

### Connecting the Camera to a PictBridge-supported Printer

If the printer you have supports the interface of PictBridge, then you may have your camera connected with the printer with the supplied USB cable and have the stored images print out directly.



1. Have both of the camera and the printer power on.
2. Press the MENU Button to go to SETUP Mode.
3. Go to PRINTER and select USB for printer connection.
4. Use the supplied USB cable to connect the camera to the PictBridge-supported printer as shown above.



## Printer Connection (PictBridge Mode)

### Select pictures to print



✦ [SELECT]: The PictBridge function will be applied only to the picture currently displayed.

✦ [ALL PICS]: The PictBridge function will be applied to all pictures.

#### ✦ Setting the Number of Copies to Print

1. Select [SELECT] or [ALL PICS]. A screen where you can set the number of copies to print will appear as shown above.
2. Press the Up/Down Button to select the number of prints. Maximum 30 prints.
3. Use the Left/Right Button to select another picture and select the number of prints for another picture.
4. After setting the number of prints, press the OK Button to save.
5. Press the Shutter Button to return to the menu without setting the number of prints.



## Printer Connection (PictBridge Mode)

### AUTO SET

**AUTO SET**  
 NO  
 YES  
 BACK: ◀ SET: OK

**Operation Steps**  
 1. MENU  
 2. ▲ or ▼  
 3. ▶  
 4. ▲ or ▼  
 5. OK



- ✦ [YES]: All values in the [CUSTOM SET] are automatically changed.
- ✦ [NO]: [CUSTOM SET] values are kept.

### CUSTOM SET

**CUSTOM SET**  
 SIZE  
 LAYOUT  
 PAPER TYPE  
 PRINT QUALITY  
 BACK: ◀ SET: OK

**Operation Steps**  
 1. MENU  
 2. ▲ or ▼  
 3. ▶  
 4. ▲ or ▼  
 5. ▶  
 6. ▲ or ▼  
 7. OK



You can select the PaperSize, Print Format, Paper Type, Print Quality, Date Print, and File Name Print menus for printed pictures.

SIZE	Setting the size of the printing paper
LAYOUT	Setting the number of pictures to be printed on a sheet of paper
PAPER TYPE	Setting the type of the printing paper
PRINT QUALITY	Setting the quality of the picture to be printed
DATE PRINT	Setting whether to print the date
FILE NAME	Setting whether to print the file name

38



## Printer Connection (PictBridge Mode)

### DPOF PRINT

**DPOF PRINT**  
 ON  
 CANCEL  
 BACK: ◀ SET: OK

**Operation Steps**  
 1. MENU  
 2. ▲ or ▼  
 3. ▶  
 4. ▲ or ▼  
 5. OK



This allows you to directly print the files with DPOF information.

- ✦ [YES]: Directly print the file with the DPOF information
- ✦ [NO]: Cancel the printing
- ✦ Depending on the manufacturer and printer model, some menus may not be available.
- ✦ With a printer without supporting the DPOF, the menu is still displayed but the function is not available.

### Printing Pictures

**PRINT**  
 STANDARD  
 INDEX  
 CANCEL  
 BACK: ◀ SET: OK

**Operation Steps**  
 1. MENU  
 2. ▲ or ▼  
 3. ▶  
 4. ▲ or ▼  
 5. OK



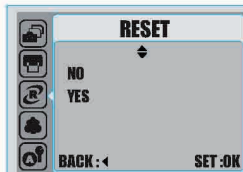
- ✦ [STANDARD]: Print the pictures stored in the memory card in set numbers. One picture is printed on one piece of paper.
- ✦ [INDEX]: Print multiple images on one sheet of paper.
- ✦ Please press down OK Button to stop printing.

39



## Printer Connection (PictBridge Mode)

### Reset



#### Operation Steps

1. MENU
2. ▲ or ▼
3. ▶
4. ▲ or ▼
5. OK



This function allows you to initialize user-changed configurations.

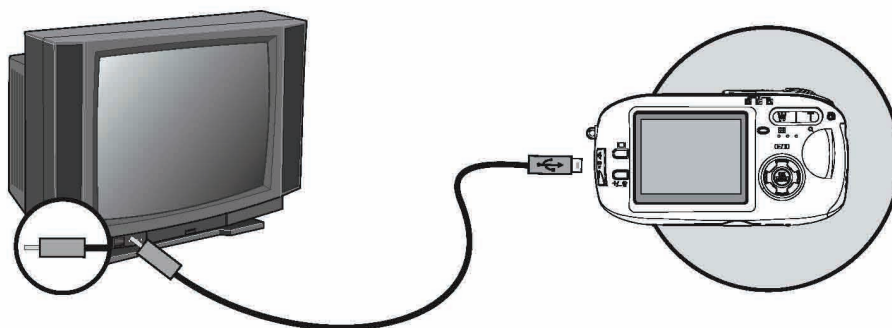
✦ [YES]: All print and image settings will be reset.

✦ [NO]: Settings will not be reset.

✦ All default printer settings are based on those of the printer manufacturer.



## TV Connection



- ✦ Connect the video-out jack of the camera to video input ports of the TV set with the supplied Video/USB Cable.
- ✦ Turn on the TV set and set the TV/Video switch to A/V mode.
- ✦ Power on the camera and then enter the Playback Mode.
- ✦ Press down the LEFT or RIGHT direction Button to go to the next or last image for TV reviewing.



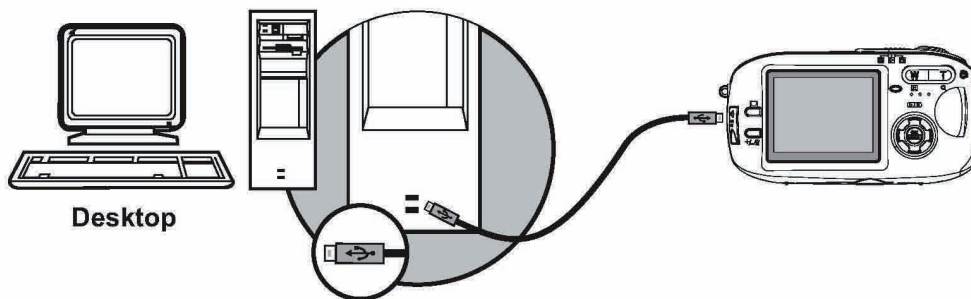
165mm+-2



## PC Connection

### How to Connect with a Computer

#### Computer / Notebook Connection



- ✦ When the USB/Video Cable is in connection with the computer while the camera is on, the camera will automatically go to the PC Mode from many working mode and turn off TFT LCD monitor as well.
- ✦ In this Mode, you can download images from your computer.

42

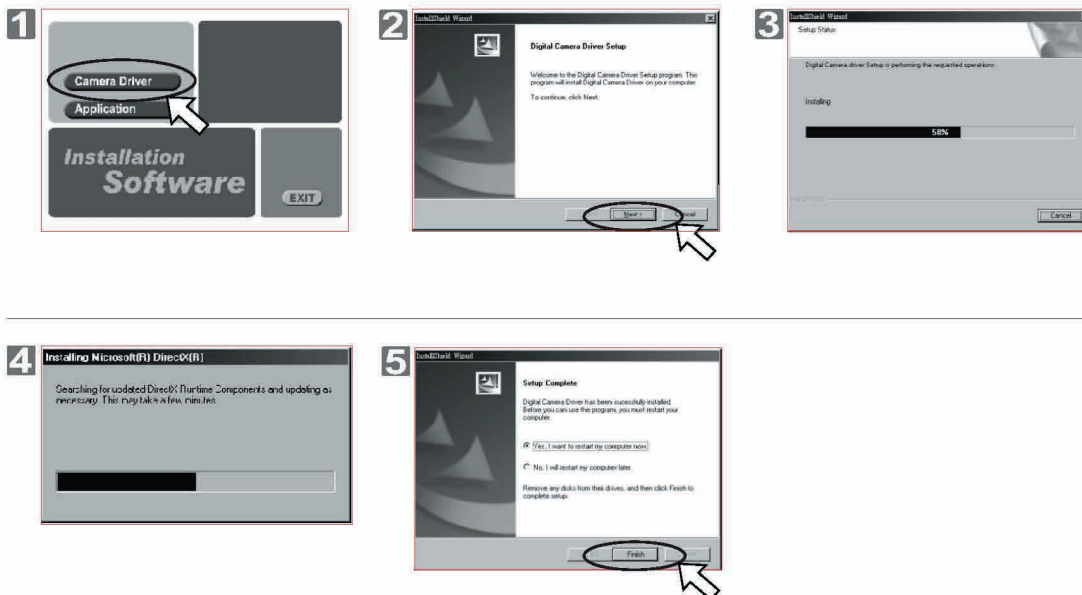
122mm+-2



## PC Connection

### Installing the Camera's Driver

#### Under Microsoft Windows 98SE

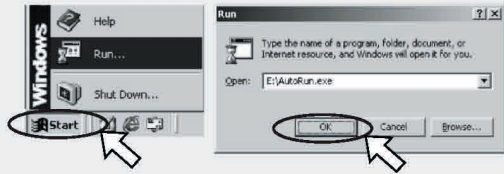


43



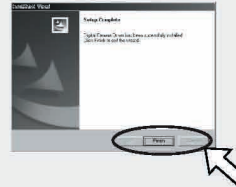
## PC Connection

### Note



If the auto run program fails under certain situation, please go to the Start Menu, click "Run" and key in "CD-ROM Drive:\AutoRun.exe" and then click "OK" Button.

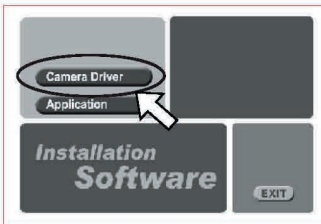
### Note



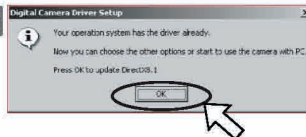
If the computer has DirectX 8.0 or later already, the installation procedure will skip above step 4 and go to the following window directly completing the driver installation.

### Under Microsoft Windows 2000

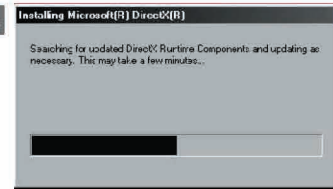
1



2



3



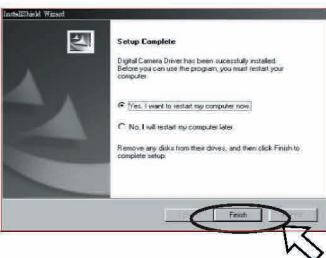
44

122mm+-2

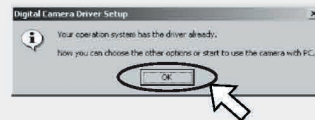


## PC Connection

4

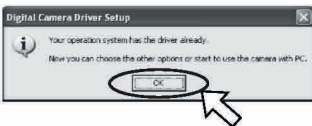


### Note



Having DirectX 8.0 or later already, the computer will skip the installation procedure from step 2 above and go to the following window directly. Please complete the driver installation with a "OK" Click.

### Under Microsoft Windows ME / XP



The camera's driver is not required under Windows ME and Windows XP. So, go to page 46 for installation of Ulead Photo Explorer or go to page 51 to download the stored image(s) onto the PC. Please click "OK", if the below window prompts.

### Under Mac 9.X or later

This camera, supporting only Mac 9.X or later versions, allows you not to install any driver. Please go to page 48 for installation of Ulead Photo Explorer or go to page 52 to download the stored images onto the PC.

45

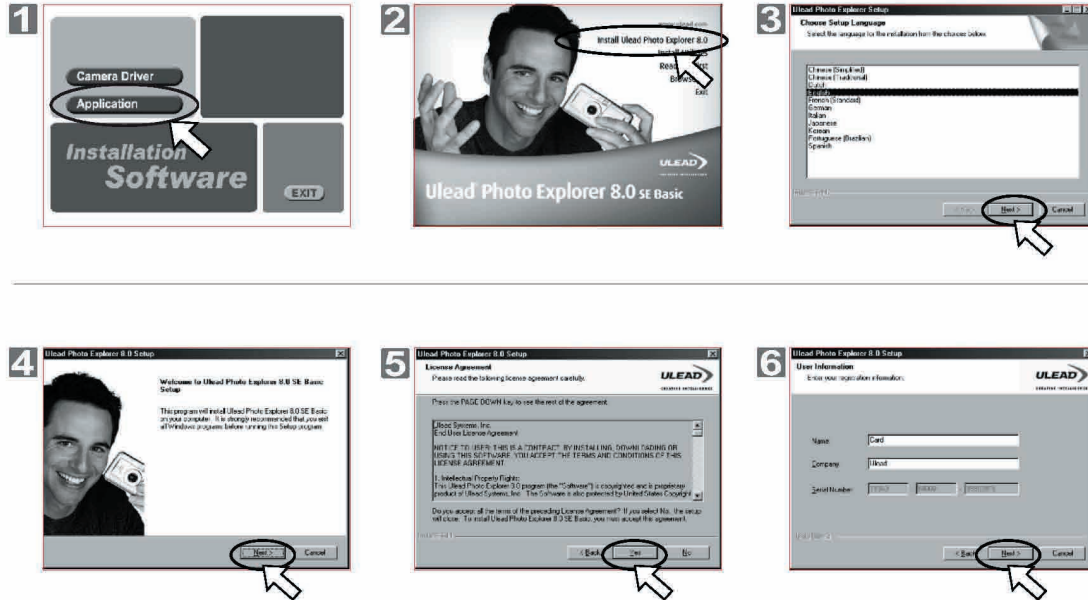
165mm+-2



## PC Connection

### ▶ Installing Ulead Photo Explorer

#### ▶ Under Windows Operating System (Windows 98SE/2000/ME/XP)

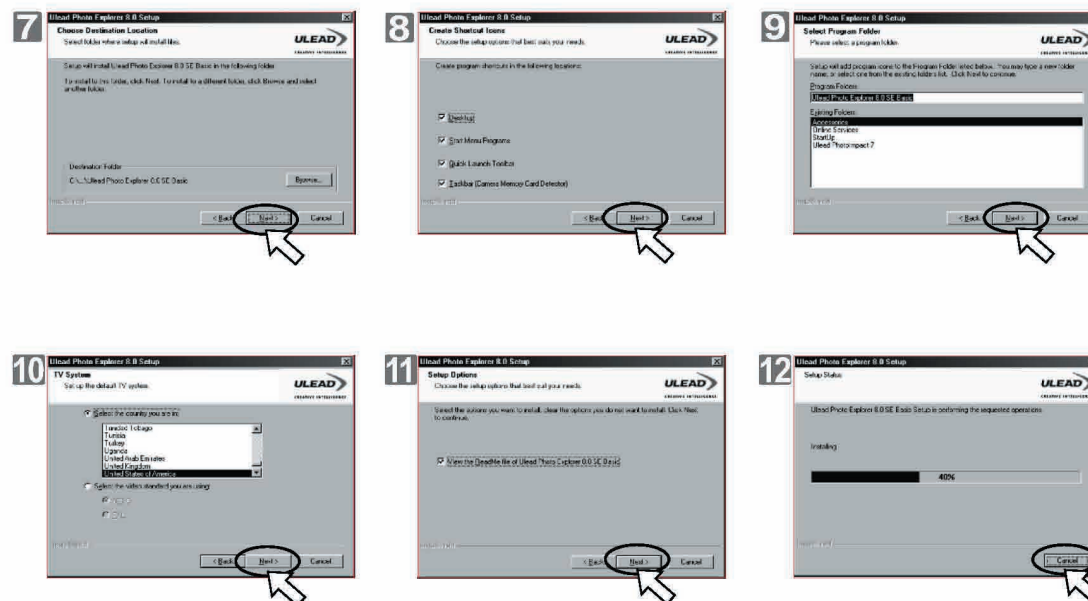


46

122mm+-2



## PC Connection



47